

PRODUCT OVERVIEW

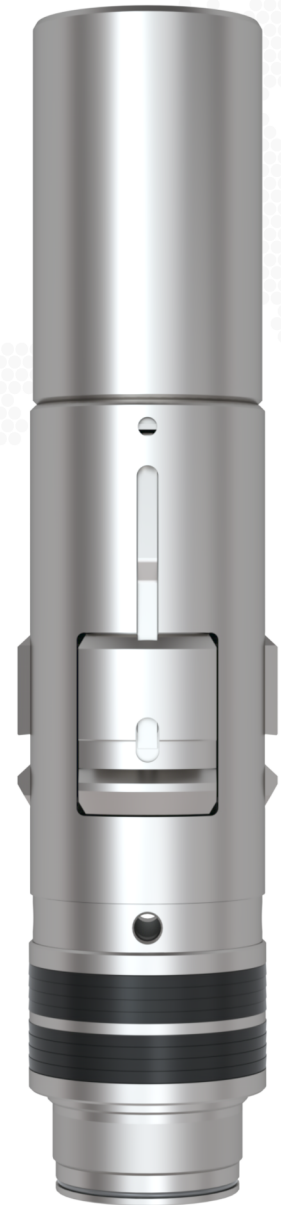
Giant Oil Tools Model GX Lock Mandrel offers flexibility in running, setting and locking operations that permits the operator many advantages over other nipple-type locking devices. The GX profile is fully selective and multiple profiles of the same size can be utilized in the same tubing string.

All Model GX Lock Mandrels have been designed to be located and locked in flow control accessories that have the corresponding GX Profile, including but not limited to Landing Nipples, Sliding Sleeves, On-Off Slick Joints and Safety Valves.

Comparable to Halliburton's X® Lock Mandrel

FEATURES & BENEFITS

- Maximum reliability and simplicity of locating
- Fully Selective
- Metallurgy compatible with service environment
- Available in a variety of material grades including
 - 4140 Carbon Steel (L-80, P-110)
 - 9Cr - 1Mo - 80 ksi yield
 - 13Cr - 80 ksi yield
 - S13Cr-110 ksi yield
 - Nickel Alloys
- Moly-Glass / Teflon Vee Seals w/ Viton O-Ring as standard seal configuration
- Premium seal configurations are available upon request



SPECIFICATIONS

Model "GX" Lock Mandrel											
Tubing								X [®] Profile		Lock Mandrel ID	
Size		Weight		ID		Drift		Packing Bore			
in.	mm	lb/ft	kg/m	in.	mm	in.	mm	in.	mm	in.	mm
1.660	42.15	2.30	3.42	1.380	35.05	1.286	32.66	1.250	31.75	0.620	15.75
		2.40	3.57								
1.900	48.26	2.40	3.57	1.660	42.16	1.516	38.51	1.500	38.1	0.750	19.05
		2.76	4.11	1.610	40.89						
		2.90	4.32								
2.063	53.37	3.25	4.84	1.751	44.48	1.657	42.09	1.625	41.27	0.750	19.05
2.375	60.33	4.60	6.85	1.995	50.67	1.901	48.29	1.875	47.62	1.000	25.4
		4.70	6.99								
2.875	73.02	6.40	9.52	2.441	62.00	2.347	59.61	2.313	58.72	1.380	35.05
		6.50	9.67								
3.500	88.9	9.30	13.84	2.992	76.00	2.867	72.82	2.813	71.45	1.750	44.45
		10.20	15.18	2.922	74.22	2.797	71.04	2.750	69.85		
4.000	101.6	11.00	16.37	3.476	88.29	3.351	85.10	3.313	84.15	2.120	53.85
4.500	114.30	12.75	18.97	3.958	100.53	3.833	97.36	3.813	96.85	2.620	66.55
5.000	127.00	13.00	19.35	4.494	114.14	4.369	110.97	4.313	109.55	2.620	66.55
5.500	139.70	17.00	25.3	4.892	124.26	4.767	121.08	4.562	115.87	3.120	79.25

X[®] is a registered trademark of Halliburton Energy Services Inc.

